



10/2016

Dear Customer,

As a result of feedback from customers, Gemu USA has undertaken the task of globalizing part numbers previously designated only for the North American Market. This change will allow those customers working in a global environment to experience continuity in the language used to describe our products throughout the world.

Changes you will see:

Spare Parts & Standard Products:

Slight changes, mostly consisting of removal of dashes, spaces, and previously unique US designations.

Non-Standard Products:

Significant changes, now capturing most aspects including complete identification of all accessories, multiple configurations, and the specifics for each seat, port, and diaphragm.

Attached you will find a presentation to help understand these changes. In addition, for several months we will utilize our best efforts to communicate both the old number and new number verbally and through standard written communications such as quotations, order acknowledgements, packing slips and invoices. Our regional managers are available to meet with you in person should you need help during this transition.

Although this change-over in part-numbering may cause initial inconvenience, a globalized system will provide clear long-term efficiencies. Please keep in mind this is a change to nomenclature only and does not affect fit, form or function of our products.

We greatly appreciate your patience and understanding during this transition.




Sincerely,

Tom Harvey
Gemu USA


Gemu Part Numbering Reference






Pneumatic Actuators - Plastic

Actuator	Actuator Size	Seat Size	Port Size	
	605	0/N	$\frac{1}{2}$ " (MG 8)	$\frac{1}{4}$ " – $\frac{1}{2}$ "
	625	1/N	$\frac{3}{4}$ " (MG 10)	$\frac{3}{8}$ " – $\frac{3}{4}$ "
		1/N	1" (MG 25)	$\frac{1}{2}$ " – 1"
		2/N	1 $\frac{1}{2}$ " (MG 40)	1 $\frac{1}{2}$ "
	687	3/N	2" (MG 50)	2"
		4/N	3" (MG 80)	2 $\frac{1}{2}$ " – 3"
		5/N	4" (MG 100)	4"




Pneumatic Actuators – Stainless Steel

Actuator	Actuator Size	Seat Size	Port Size
 <p>650</p>	0T1	½" (MG 8)	¼" – 1/2"
	1T1	¾" (MG 10)	3/8" – ¾"
	2T1	1" (MG 25)	½" – 1"
	3T1	1 1/2" (MG 40)	1 ½"
	4T1	2" (MG 50)	2"
	5T1	3" (MG 80)	2 ½" – 3"
	6T1	4" (MG 100)	4"



Manual Actuators – Plastic (Standard)

Actuator	Actuator Size	Seat Size	Port Size	
	601	0TS	$\frac{1}{2}$ " (MG 8)	$\frac{1}{4}$ " – $\frac{1}{2}$ "
	612	1TS	$\frac{3}{4}$ " (MG 10)	$\frac{3}{8}$ " – $\frac{3}{4}$ "
		2TS	1" (MG 25)	$\frac{1}{2}$ " – 1"
	673	3TS	1 $\frac{1}{2}$ " (MG 40)	1 $\frac{1}{2}$ "
		4TS	2" (MG 50)	2"

Manual Actuators – Plastic (Sealed for COP)

Actuator	Actuator Size	Seat Size	Port Size
	-673 0P9	½" (MG 8)	¼" – ½"
	-673 1P9	¾" (MG 10)	⅜" – ¾"
	-673 2P9	1" (MG 25)	½" – 1"
	-673 3P9	1 ½" (MG 40)	1 ½"
	-673 4P9	2" (MG 50)	2"

Manual Actuators – 653/654 (Standard)

Actuator	Actuator Size	Seat Size	Port Size
 653	1TH	3/4" (MG 10)	3/8" – 3/4"
	2TH	1" (MG 25)	1/2" – 1"
	3TH	1 1/2" (MG 40)	1 1/2"
	4TH	2" (MG 50)	2"
 654	5TS	3" (MG 80)	2 1/2" – 3"
	6TS	4" (MG 100)	4"

Connection Codes

Body Style	Butt Weld	Tri Clamp	BW x TC
2-ways (D)	59	80	See Slide 13
Zerostatics T-Valves (T) Use Point (U)	94	8U	L9/R9 (on Main)
Multiports (M)	59	8U	NA

Material Codes

Body Style	1.4435	Fe < .5%	Hastelloy C-22	AL6XN
2-ways (D)	40 (Forged)	42 (Forged)	A3	A6
Zerostatics T-Valves (T) Use Point (U)	41 (Wrought)	43 (Wrought)	A3	A6
Multiports (M)	41 (Wrought)	43 (Wrought)	A3	A6

Diaphragm Codes

Seat Size	PTFE	EPDM 17	EPDM 13
MG 8	5A	17	3A
MG 10	52	17	13
MG 25	5E	17	13
MG 40	5E	17	13
MG 50	5E	17	13
MG 80	5E	17	13
MG 100	52	17	13

Control Functions

Fail Closed	Fail Open	Dual Acting
1	2	3

Surface Finish

Code	BPE	Max Ra μin	EP
1502	SF3	30	No
1507	SF2	25	No
1508	SF6	25	Yes
1927	SF1	20	No
1928	SF5	20	Yes
1929	SF4	15	Yes

2-Way Part Numbers

Automated 1" 2-way, BW, EPDM, FC, 25 Ra Max SF2

Current: -687025D5940171-1507

New: 687 25D59401711/N 1507

↑
Actuator Size will
now always be
included



Delivering Quality and Technology

3265 Sunset Lane • Hatboro, PA 19040

P: 800.345.3569 • F: 888.329.9669

www.sentinelprocess.com

2-Way Part Numbers (TC x BW)

Automated 1" 2-way, BW x TC, EPDM, FC, 25 Ra Max SF2

Current: -687025D9340171-1507

New: 687 25D80401711/N2559 1507



Delivering Quality and Technology

3265 Sunset Lane • Hatboro, PA 19040

P: 800.345.3569 • F: 888.329.9669

www.sentinelprocess.com

Tri Clamp by Butt Weld will be identified as a
Code 80 on S1 and the Size and Code 59 on S2

Zerostatic Part Numbers

Automated 1" x 2" T Valve, BWxTCxBW, EPDM, FC, 25 Ra Max SF2

Current: -687025T8U41171-050-94-1507

New: 687 25T8U411711/N 5094 1507



Delivering Quality and Technology

3265 Sunset Lane • Hatboro, PA 19040

P: 800.345.3569 • F: 888.329.9669

www.sentinelprocess.com

Cluster Valve Part Numbers (at Quote / before Drawings) W600

Cluster Valve CON 05

V1: Automated 2" BW, EPDM, FC, 25 Ra Max SF2

V2: Automated 2" TC, EPDM, FC, 25 Ra Max SF2

Current: -687050D5940171-1507-XXXX

Configuration

Placeholder

New: W600U05 40 1507XXXX

Actuators, CF, Sizes → 68713/N 68713/N

Port Sizes and Connections → 5059 5059 5080

Diaphragm Sizes and Code → 5017 5017



Delivering Quality and Technology

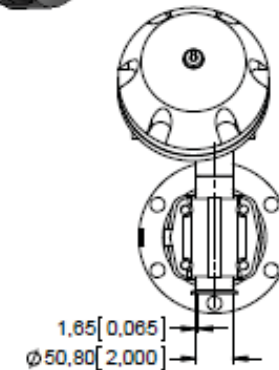
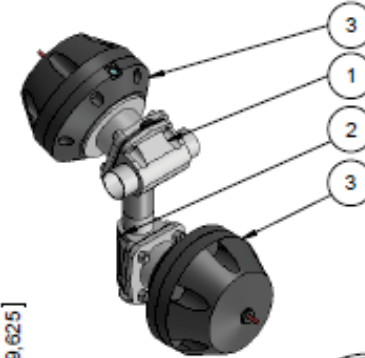
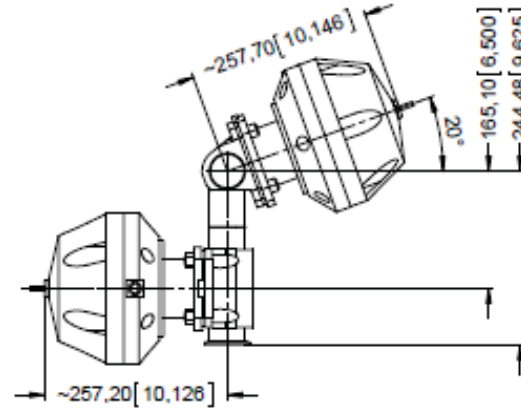
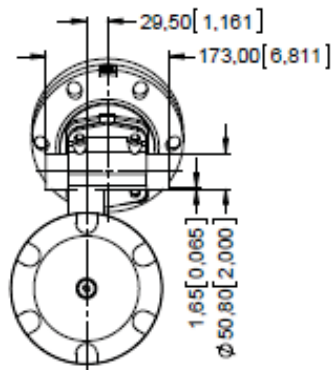
3265 Sunset Lane • Hatboro, PA 19040

P: 800.345.3569 • F: 888.329.9669

www.sentinelprocess.com

Cluster Drawing

POS-NO.	QTY.	NAME
1	1	K800_50D59SMXX_____XXXX
2	1	K800_50D59SMXX_____5080XXXX
3	2	9887_50Z_13/N



FOR THE TUBE CONNECTIONS SHOWN, REFERENCED PIPE STANDARDS AND TOLERANCES ARE APPLICABLE



Delivering Quality and Technology
 3265 Sunset Lane • Hatboro, PA 19040
 P: 800.345.3569 • F: 888.329.9669
 www.sentinelprocess.com

MANUFACTURED FROM		DOCUMENT ID
Workflow: released	DATE: 18.08.2015 NAME: dswyn	US-002833
CREATED: 18.08.2015 CHECKED: - RELEASED: 18.08.2015	VERSION: - MATERIAL: 1.4435 / 316L	ITEM No: KY162584
REV No: DATE: NAME: W600U05 40 F621		50 50
GEMU® SCALE: 68713/N 68713/N GEMÜ VALVES INC. 1:6 5059 5059 5080 3000 CAMP CREEK PONDY BUILDING 2600 STE. 120 ATLANTA, GA 30301 SUBSTITUTE:		ISS: AS

COMPANY
APPROVED BY
DATE

Cluster Valve Part Numbers (after Drawings) W600

Cluster Valve CON 05

V1: Automated 2" BW, EPDM, FC, 25 Ra Max SF2

V2: Automated 2" TC, EPDM, FC, 25 Ra Max SF2

Current: -687050D5940171-1507-F621

New: W600U05 40 1507-F621

68713/N 68713/N

5059 5059 5080

5017 5017



Delivering Quality and Technology

3265 Sunset Lane • Hatboro, PA 19040

P: 800.345.3569 • F: 888.329.9669

www.sentinelprocess.com

Block Valve Part Numbers (at Quote / before Drawings)

P600

03-02.SL Block

V1: Automated 1" FC, V2: Automated ¾" FC

S1,S2: 1" BW, S3: ¾" BW

EPDM, 25Ra Max SF2

Current: -687025M5941171-03-02.SL -1507-XXXX

New: P600M 03-02.SL 41 1507 XXXX

68712/N 62511/N

2559 2559 2059

2517 1017



Delivering Quality and Technology

3265 Sunset Lane • Hatboro, PA 19040

P: 800.345.3569 • F: 888.329.9669

www.sentinelprocess.com

Block Drawing

POS-No.	QTY.	NAME
1	1	5M600-99018282X_00155714
2	1	9687_25D_11/N
3	1	9625_10T_1_____00160973

SENTINEL
PROCESS SYSTEMS, INC.

Delivering Quality and Technology

3265 Sunset Lane • Hatboro, PA 19040
P: 800.345.3569 • F: 888.329.9669
www.sentinelprocess.com

COMPANY
APPROVED BY
DATE

FOR THE TUBE CONNECTIONS SHOWN, REFERENCED PIPE STANDARDS AND TOLERANCES ARE APPLICABLE				DOCUMENT ID
<small>ALIGNMENT TOLERANCES GENERAL TOLERANCES DIN ISO 2768-mS DIN EN ISO 13053-C</small>				US-902853
Workflow released	DATE	NAME	VERSION	ITEM No.
CREATED	22.08.2016	swjcn	-	KY162649
CHECKED				
RELEASED	22.08.2016	swjcn		
P600M 03-02.SL 41 F636				25 10
REV. No.	DATE	NAME		
GEMU®		SCALE	68711/N 62511/N 2559 2559 2059	
<small>GEMU VALVES INC. 3600 CAMP CREEK HWY BUILDING 2600 STE. 100 ATLANTA, GA 30331</small>		SUBSTITUTE		

Block Valve Part Numbers (after Drawings) P600

03-02.SL Block

V1: Automated 1" FC, V2: Automated 3/4" FC

S1,S2: 1" BW, S3: 3/4" BW

EPDM, 25Ra Max SF2

Current: -687025M5941171-03-02.SL -1507-F636

New: P600M 03-02.SL 41 1507-F636

68712/N 62511/N

2559 2559 2059

2517 1017



Delivering Quality and Technology

3265 Sunset Lane • Hatboro, PA 19040

P: 800.345.3569 • F: 888.329.9669

www.sentinelprocess.com